

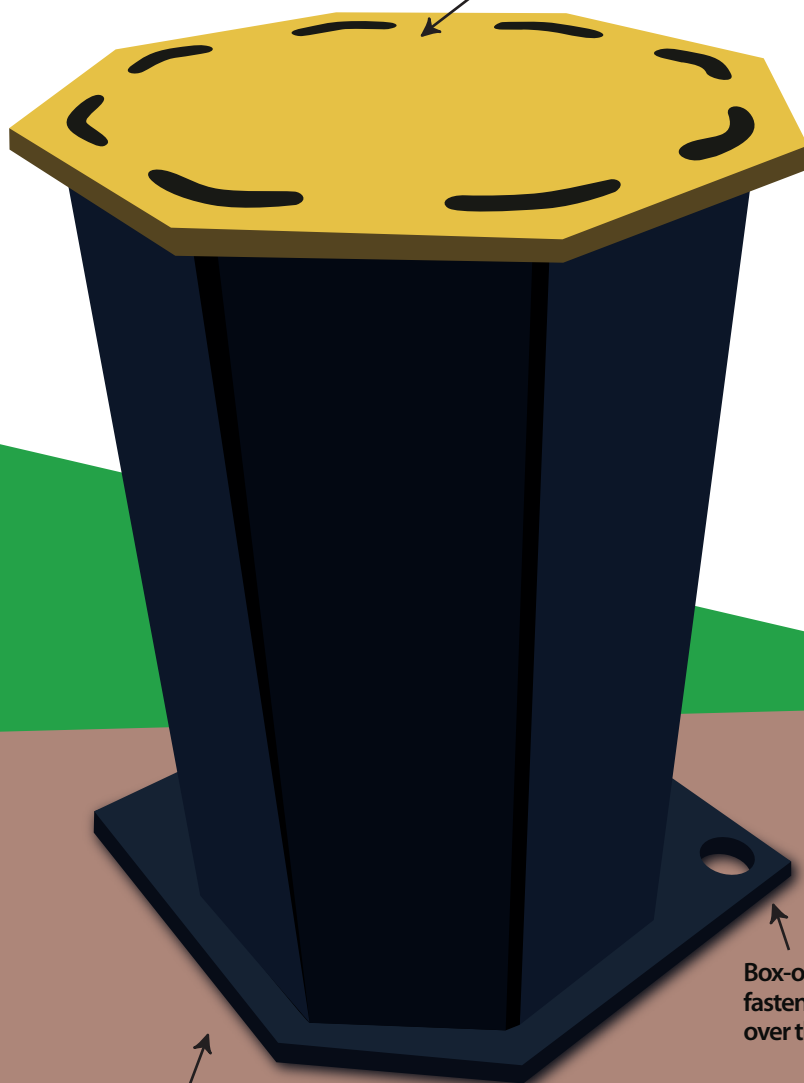
RÉZABOITE CFO[®]

BOX-OUT MODULE

IN-SLAB BOX-OUT SYSTEM FOR RUNNING THROUGH PLUMBING-LINE PVC DUCTS AND SERVICE PIPES COVERING ALL SERVICE-DUCT BOX-OUT NEEDS.



Optimized run-through diameters



Box-out nailed or fastener-fixed into place over the formwork base

Configurable solution accommodating 18, 20, 23 and 25-cm-thick slabs

Geared to accommodate service run-throughs for PVC ducts, mechanical ventilation, hot water/heat recycling, and more

FEATURES & ADVANTAGES

- Built-in pre-drilled formwork base
- Box-out fill-in
- Optimized concreting
- Quick to install
- Delivered ready-to-fit
- Easy set-up
- Precision positioning of the box-out

AKYBOARD[®]

Built entirely in AKYBOARD[®] an innovative advanced performance material: 100% recyclable, waterproof, pressure-resistant, and outstandingly workable.

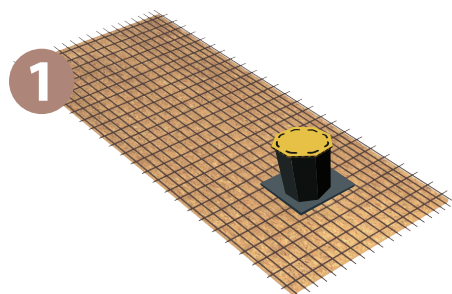
QUESTIONS ?
04 73 78 57 41



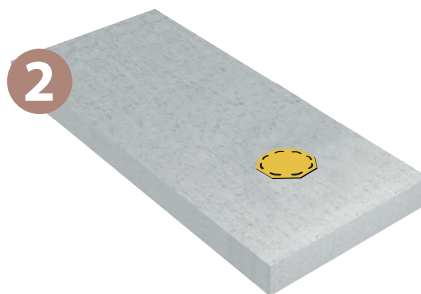
siiB France

Groupe MABAMURE

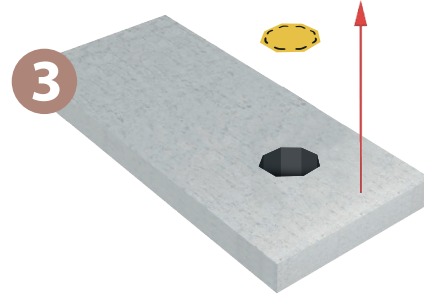
IMPLEMENTATION: CFO



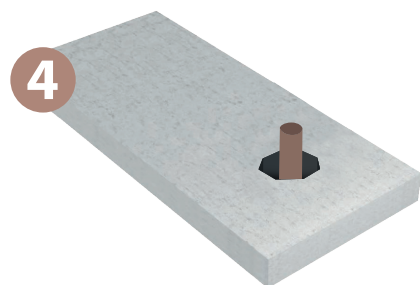
1 Cut away the rebars to position the box-out opening. Fit the RÉZABOITE CFO into place over the formwork base.



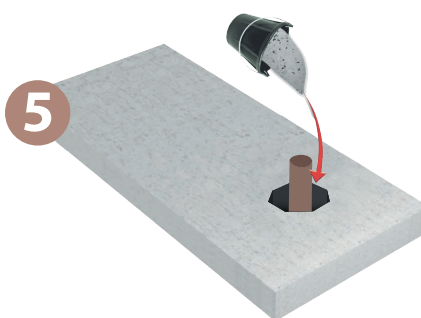
2 Pour concrete around the RÉZABOITE CFO.



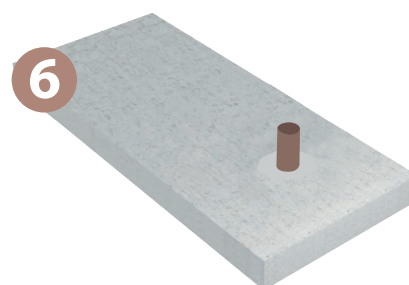
3 Remove the RÉZABOITE CFO top-cover.



4 Run the service pipes through the opening.



5 Fill in directly—no further formwork needed.



| PRODUCT CODE | DRILL-THROUGHS Ø (MM) | TYPE OF SERVICE DUCT | DUCT Ø |
|---------------|-----------------------|----------------------------------|-----------|
| CFO80 - P75 | 75 | HOT WATER/HEAT RECYCLING | <75 |
| CFO100 - P90 | 90 | PVC DUCTS/MECHANICAL VENTILATION | 90 / 80 |
| CFO125 - P110 | 110 | PVC DUCTS | 100 / 110 |
| CFO140 - P135 | 135 | PVC DUCTS/MECHANICAL VENTILATION | 125 |
| CFO160 - P150 | 150 | PVC DUCTS/MECHANICAL VENTILATION | 140 |
| CFO200 - P170 | 170 | MECHANICAL VENTILATION | 160 |
| CFO235 - P210 | 210 | MECHANICAL VENTILATION | 200 |
| CFO285 - P260 | 260 | MECHANICAL VENTILATION | 250 |
| CFO350 - P325 | 325 | MECHANICAL VENTILATION | 315 |
| CFO380 - P365 | 365 | MECHANICAL VENTILATION | 350 |
| CFO435 - P410 | 410 | MECHANICAL VENTILATION | 400 |
| CFO485 - P460 | 460 | MECHANICAL VENTILATION | 450 |
| CFO535 - P510 | 510 | MECHANICAL VENTILATION | 500 |



ENVIRONMENTALLY CONSCIOUS

100%-recyclable polypropylene
Incinerates without giving off noxious
fumes and burns without residue