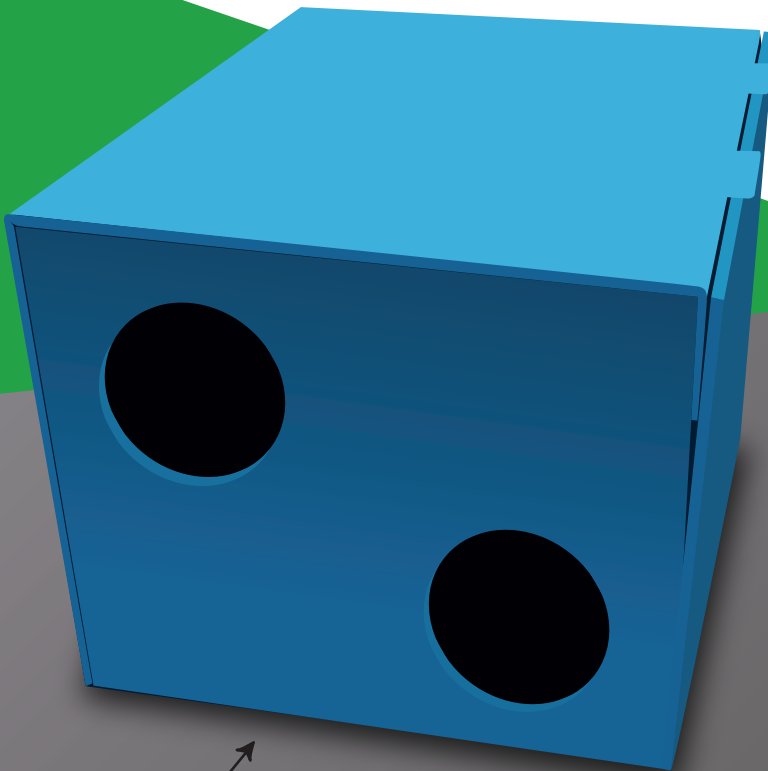
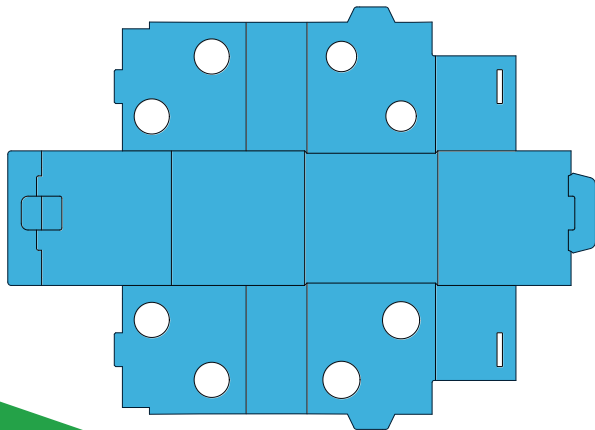


RÉZABOÎTE VOILE *ECO*

FORMWORK SYSTEM FOR STRUCTURAL OPENINGS IN SHELLS

CREATION OF OPENINGS FOR SERVICE DUCTS (CMV, WASTEWATER, AIR-CONDITIONING, TV, ETC.)

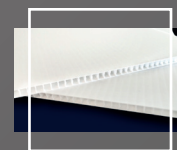


Structural openings in shells

CHARACTERISTICS & ADVANTAGES

- In stock
- Delivered flat-packed, easy to assemble
- Weatherproof
- Resistant to the pressure of concrete
- Does not adhere to concrete, easy to remove
- Light, easy to handle
- Simplified storage and logistics

AKYLUX®



Cellular polypropylene constituted from carbon and hydrogen

QUESTION ?
04 73 78 57 41

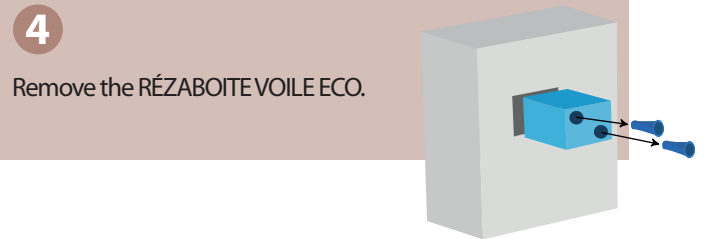
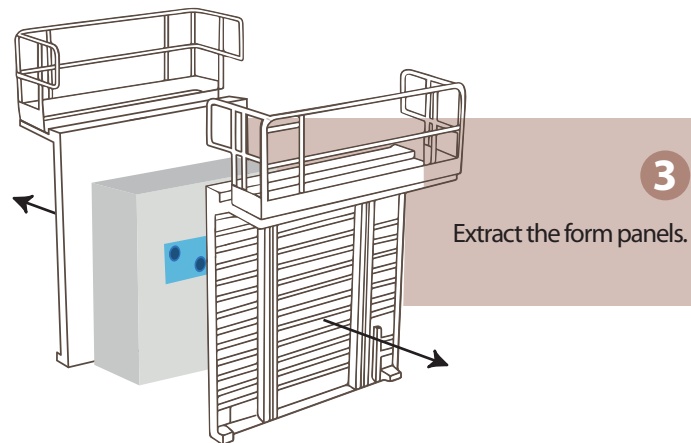
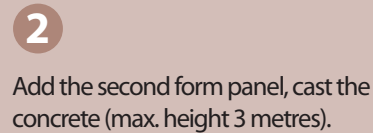
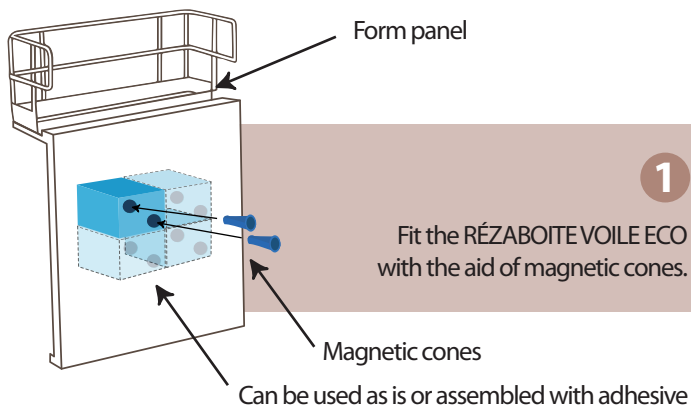
- Drilling holes for magnetic cones
- Product reserved for housing projects
- Can be used as is or assembled with adhesive



siiB France

Groupe MABAMURE

IMPLEMENTATION



Fields of application

Structural openings in reinforced concrete shells for builders and housing projects. The R ZABOITE VOILE ECO notably replaces polystyrene, wood and cardboard on HQE projects.

Instructions for use

The R ZABOITE VOILE ECO saves time due to its placement method and ease of use; one only has to fold back the sheet of AKYLUX and the opening is operational in 30 seconds.

Dimensions available in stock

Dimensions (cm)	Thickness (cm)	Parts per packet
15 x 15	20	25
20 x 20	20	25
25 x 25	20	25
30 x 30	20	25



ENVIRONMENTAL PROTECTION

100% recyclable polypropylene
Can be incinerated without releasing toxic fumes, burns without leaving any residue

